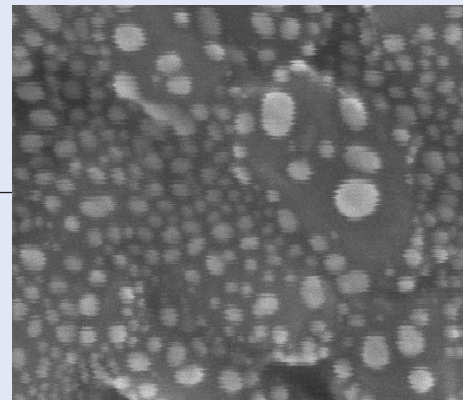
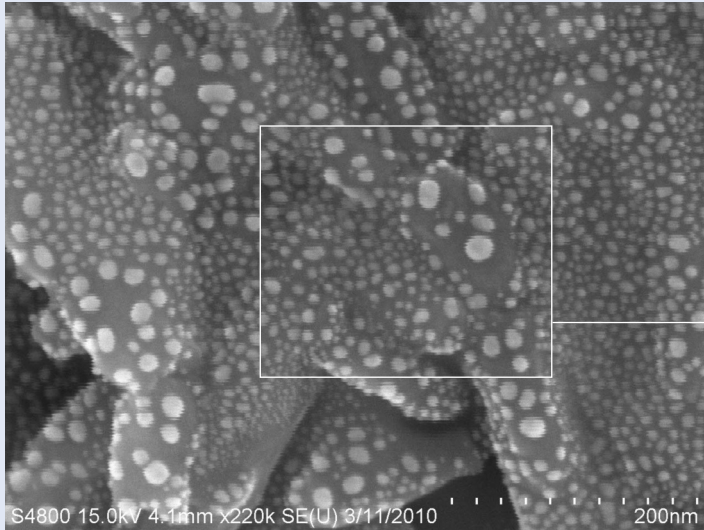


Shown below are “before and after” images obtained by an Hitachi S-4800 Scanning Electron Microscope isolated on a TMC STACIS[®] iX SEM-BaseTM at Nationwide Children’s Hospital in Columbus, Ohio. Images of a pure gold reference sample were taken at 200,000x magnification. In spite of the severe vibration environment (6th floor on a windy day), the SEM-BaseTM yielded resolution within specification. These two images were taken immediately before and after the SEM-BaseTM installation, respectively. No other variables were changed between photographs.



Before



After

